

Corning® Water Testing Product Selection Guide

CORNING



Water Testing

Corning provides a range of equipment and disposable and reusable laboratory supplies for compliance testing including a full range of PYREX® glassware—the leading brand of laboratory glassware for more than 100 years.

Our PYREX products include every day lab tools, such as beakers and graduated cylinders, as well as specialized items such as PYREX flasks designed for Kjeldahl digestions, desiccators, distillation glassware, and bottles for Biochemical Oxygen Demand (BOD) testing.

In addition, we offer a full range of Corning® Gosselin™ microbiological consumables to test for bacterial indicators prior to wastewater discharge, as well as a full range of benchtop equipment including Corning stirring hot plates, incubators, water baths, compact centrifuges, and more.

To see the full line of Corning equipment and supplies, visit www.corning.com/lifesciences.

Product Ordering Information

For information on Purchasing Options, Terms and Conditions of Sale, Return and Repair Policies, and Warranty/Guarantee Registration, visit our website at www.corning.com/how-to-buy.

Products may not be available in all markets.

	Workflow					Page No(s).
	S Sampling	P Preparation	T Testing	A Analysis	D Disposal	
Water Test Sample Containers	■	■	■			1
Autoclavable Bottles	■	■	■			1
Water Sampling Bottles	■					2
Storage Bottles	■	■	■	■		2
Equipment <i>Centrifugation, Constant Temperature, Agitation</i>		■				3 - 7
Liquid Handling <i>Pipet Controllers, Pipettors, Serological Pipets, Hand-held Pipet Tips (plastic, glass)</i>		■	■			8 - 11
Flasks (glass) <i>Vacuum/Filtering, Volumetric, Erlenmeyer</i>		■	■			12
<i>Kjeldahl</i>			■			12
Graduated Cylinder (glass)		■	■			13
Biochemical Oxygen Demand (BOD) Bottles (glass)		■	■			13
Beaker (glass)		■	■			13
Centrifugation and Storage <i>Centrifuge Tubes, Microcentrifuge Tubes</i>		■	■	■		14 - 15
Additional Glassware <i>Desiccator, Fritted Disc (Gooch Type), Distillation Apparatus, Filter Funnels, Burets</i>			■			16
Petri Dishes <i>Glass, Plastic</i>			■	■		17
Inoculating Loops			■	■		18
Autoclave Bags					■	19

Water Test Sample Containers



Corning Coliform Water Test Sample Containers

Cat. No.	Capacity (mL)	Style	Packaging
1700-100	120	Sterile with sodium thiosulfate	100/pk, 100/cs
1705-100	120	Sterile without sodium thiosulfate	100/pk, 100/cs



Corning Snap-seal Disposable Plastic Sample Containers

Cat. No.	Capacity (mL)	O.D. x Height (mm)	Packaging
1730-2C	45	30 x 84	400/pk, 400/cs
1730-4H	120	45 x 91	200/pk, 200/cs
1730-4L	120	61 x 53	200/pk, 200/cs
1730-8	240	65 x 76	100/pk, 100/cs
1730-10	300	63 x 112	100/pk, 100/cs

Autoclavable Bottles



PYREX® Bottle, Solution

Cat. No.	Approx. Capacity (mL)	Rubber Stopper No.	Approx. O.D. x Height (mm)	Qty/Cs
1596-19L	19,000	12	292 x 485	1



PYREX Bottle, Media, Storage, Screw Cap

Cat. No.	Approx. Capacity (mL)	Thread Finish	Approx. O.D. x Height (mm)	Grad. Range (mL)	Grad. Increment (mL)	Qty/Cs
1395-250	250	GL 45	70 x 138	50-200	50	10

Water Sampling Bottles



Corning® Gosselin™ Water Sampling Bottles

Cat. No.	Description	Qty/Pk	Qty/Cs
HP125B-55	125 mL bottle, PET, contains 160 mg/L dosage of sodium thiosulfate, 31 mm tamper-evident screw cap, sterile	24	336
HP250B-55	250 mL bottle, PET, contains 160 mg/L dosage of sodium thiosulfate, 31 mm tamper-evident screw cap, sterile	24	144

Storage Bottles



Corning® Polystyrene (PS) Storage Bottles

Corning Low Profile Easy Grip Style

Cat. No.	Volume	Neck size (mm)	Cap Style	Sterile	Qty/Pk	Qty/Cs
431175	150 mL	45	Plug seal	Yes	2	24
430281	250 mL	45	Plug seal	Yes	2	24
430282	500 mL	45	Plug seal	Yes	2	24
430518	1L	45	Plug seal	Yes	2	24



Corning Square Polycarbonate (PC) Storage Bottles

Cat. No.	Volume	Bottle Shape	Neck Diam. (mm)	Qty/Bag	Qty/Cs
431430	150 mL	Square	45	1	24
431431	250 mL	Square	45	1	24
431432	500 mL	Square	45	1	24
431433	1L	Square	45	1	24



Corning Gosselin™ Wide Mouth HDPE Bottles

- Break-resistant and translucent high-density polyethylene (HDPE)

Cat. No.	Description	Qty/Cs
LR50A-18	50 mL, 27 mm red screw cap, sterile	600
LR100-12	100 mL, 37 mm red screw cap, sterile	335
LR150A-14	150 mL, 37 mm red screw cap with natural seal, sterile	250
LR250-09	250 mL, 37 mm red screw cap, sterile	145
LR500-04	500 mL, 58 mm red screw cap, sterile	140
LR1000-08	1L, 58 mm red screw cap, sterile	68

Equipment



Corning® LSE™ Mini Microcentrifuge

Cat. No.	Description	Voltage	Speed (rpm)	Dimensions (H x W x D)	Qty/Cs
6770	LSE mini microcentrifuge	110-240V, 50/60Hz	6,000	6.8 x 5.8 x 4.8 in. (17.4 x 14.8 x 12.2 cm)	1

Accessories included with Cat. No. 6770 and also sold separately:

Cat. No.	Description	Qty/Pk
6770-RT	Rotor, holds 8 x 1.5/2.0 mL tubes	1
6770-RTS	Rotor, holds 4 x 8-strip tubes	1
6770-RTA.20	Adapter, 0.20 for rotor (Cat. No. 6770-RT)	8
6770-RTA.25	Adapter, 0.25 for rotor (Cat. No. 6770-RT)	8
6770-RTA.5	Adapter, 0.5 for rotor (Cat. No. 6770-RT)	8



Corning LSE High Speed Microcentrifuge

Cat. No.	Description	Voltage	Plug Type	Speed (rpm)	Weight	Dimensions (H x W x D)	Qty/Pk
6765-HS	LSE high speed microcentrifuge	120V, 50/60Hz	US	500 - 13,300	18 lbs. (8.1 kg)	9.25 x 11.5 x 8.5 in. (23.5 x 29.3 x 21.6 cm)	1

Accessories (sold separately)

Cat. No.	Description	Qty/Pk
480134	Individual adapters for 0.5/0.4 mL tubes	6
480135	Individual adapters for 0.2 mL tubes	6



Corning LSE Compact Centrifuge

Cat. No.	Description	Voltage	Plug Type	Speed (rpm)	Weight	Dimensions (L x W x D)	Qty/Cs
6755	LSE compact centrifuge	120V, 50/60Hz	US	200 - 6,000	33 lbs. (15 kg)	11 x 14.6 x 10.2 in. (28 x 37 x 26 cm)	1

Rotors

Cat. No.	Description	Max. Speed (rpm)	Max. RCF	Qty/Cs
480136	LSE 6 x 50 mL fixed angle rotor	6,000	3,820	1
480137	LSE 12 x 15 mL fixed angle rotor	6,000	4,180	1
480138	LSE 6 x 5 mL swing-out rotor	3,500	1,450	1
480139	LSE 18 x 1.5 mL fixed angle rotor	6,000	2,930	1
480143	LSE combination rotor for 5, 15, and 50 mL tubes	6,000	3,820	1

Adapters

Cat. No.	Description	Qty/Cs
480140	LSE adapters for 10 and 15 mL tubes in 50 mL rotor	6
480141	LSE adapters for 5 and 7 mL tubes in 50 mL rotor	6
480142	LSE adapters for 5, 7, and 10 mL tubes in 15 mL rotor	6



6 x 50 mL fixed angle rotor



12 x 15 mL fixed angle rotor



6 x 5 mL swing-out rotor



18 x 1.5 mL fixed angle rotor



Combination rotor

Corning® LSE™ 6 Liter Digital Water Bath



Cat. No.	Description	Voltage	Temperature Range	Weight	Dimensions (H x W x D)	Qty/Cs
6783	LSE digital water bath, 6L	120V, 50/60Hz	Ambient +5°C to 99°C	19 lbs. (8.6 kg)	14.9 x 11.4 x 9.0 in. (12.9 in. w/cover) 38 x 29 x 23 cm (33 cm w/cover)	1

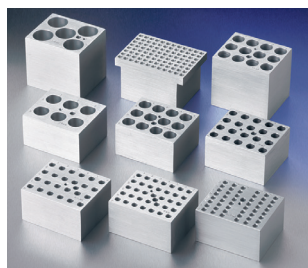
Corning LSE Digital Dry Bath Heater



Cat. No.	Description	Block Capacity	Voltage	Plug Type	Weight	Dimensions (L x W x H)	Qty/Cs
6875-SB	LSE digital dry bath heater	Single	120V, 50/60Hz	US	7.0 lbs. (3.2 kg)	8.3 x 12.4 x 4.7 in. (21 x 29 x 12 cm)	1

Accessories

Cat. No.	Description	Qty/Cs
480117	Single block, 20 x 2.0 mL tubes	1
480119	Single block, 24 x 1.5 mL tubes	1
480124	Single block, 12 x 15 mL centrifuge tubes	1
480129	Single block, 5 x 50 mL centrifuge tubes (for single block unit only)	1



Corning Digital Stirring Hot Plate



Cat. No.	Model	Voltage	Temperature/ Stir Range (rpm)	Dimensions (W x D x H)	Qty/Cs
6795-420D	PC-420D	120V/60Hz	5°C - 550°C/60 - 1,150	4.25 x 7.75 x 11 in. (10.8 x 19.7 x 28 cm)	1
6795-620D	PC-620D	120V/60Hz	5°C - 550°C/60 - 1,150	4.625 x 11 x 15.375 in. (11.75 x 19.7 x 39.05 cm)	1

Corning® LSE™ Benchtop Shaking Incubator



Cat. No.	Description	Voltage	Operation Temperature Range	Shaker Speed (rpm)	Dimensions (H x W x D)	Qty/Pk
6790	LSE benchtop shaking incubator with platform	120V, 50/60Hz	Ambient +5°C to 70°C	20 to 300	14.6 x 20.9 x 15.7 in. (37 x 53 x 40 cm)	1

Accessories (sold separately)

Cat. No.	Description	Qty/Cs
480144	Universal platform, 30 x 30 cm	1
480145	Petri dish shelf	1
480146	Sticky mat, 150 x 150 x 30 mm	1
480147	Microtiter hotel, holds maximum 3 microplates	1
480148	Combination tube holder, 6 x 15/50 mL tubes	1
480149	Plastic clamp, 125 mL	1
480150	Plastic clamp, 250 mL	1
480151	Plastic clamp, 500 mL	1
480152	Plastic clamp, 1000 mL	1

Corning LSE 49L Shaking Incubator



Cat. No.	Description	Voltage	Operation Temperature Range	Shaker Speed (rpm)	Weight	Dimensions (H x W x D)	Qty/Pk
6750	LSE shaking incubator, 49 Liters	120V, 50/60Hz	Ambient +5°C to 80°C	20 to 400 (300 when stacked)	83 lbs. (37.7 kg)	23 x 19.25 x 22.25 in. (42.5 x 55 x 58 cm)	1

Accessories (sold separately)

Cat. No.	Description	Qty/Cs
480153	Flask clamp platform, pre-drilled	1
480154	Flat platform with nonslip rubber mat (300 x 300 mm)	1
480155	Double flat platform with non-slip rubber mat (300 x 300 mm)	1
480156	Universal spring-loaded clamp platform for Cat. No. 6750	1
480157	Shelf, full, for Cat. No. 6750	1
480158	Stacking adapter for Cat. No. 6750	1

Corning LSE 71L Shaking Incubator



Cat. No.	Description	Voltage	Operation Temperature Range	Shaker Speed (rpm)	Weight	Dimensions (L x W x D)	Qty/Cs
6753	LSE shaking incubator, 71 Liters	120V	Ambient +5°C to 80°C	20 - 300	140 lbs. (63.6 kg)	22.6 x 21.4 x 25 in. (57.4 x 54.4 x 63.5 cm)	1

Accessories (sold separately)

Cat. No.	Description	Qty/Cs
480159	Shaking platform pre-drilled for flask clamps	1
480160	Flat shaker platform with non-slip rubber mat (390 x 330 mm)	1
480161	Platform with 4 x 2L flask clamps	1
480162	Platform with 6 x 1L flask clamps	1
480163	Platform with 8 x 500 mL flask clamps	1
480164	Platform with 12 x 250 mL flask clamps	1
480165	Platform with 20 x 125 mL flask clamps	1
480166	Platform with 30 x 50 mL flask clamps	1
480168	Rack holder for 15 mL test tubes	1
480169	Rack holder for 50 mL test tubes	1
480170	Shelf, full, for Cat. No. 6753	1



Corning® LSE™ Vortex Mixer

Cat. No.	Description	Voltage	Plug Type	Speed (rpm)	Weight	Dimensions (L x W x D)	Qty/Cs
6775	LSE vortex mixer	120V, 50/60Hz	US	0 - 3,400	4.8 lbs. (2.2 kg)	5.5 x 6.3 x 5.1 in. (14 x 16 x 13 cm)	1

Accessories

Cat. No.	Description	Qty/Cs
480100	Optional head, 3 inch, for processing larger numbers of tubes	1
480101	Optional head for 24 x 1.5/2.0 mL tubes, 24 x 0.5 mL tubes, and 32 x 0.2 mL tubes (or 4 tube strips)	1
480103	Optional head for 8 x 15 mL and 8 x 12/13 mm diameter tubes	1
480104	Optional head attachment for 6 x 50 mL tubes	1
480105	Optional head for 12 x 1.5/2.0 mL tubes, held horizontally	1
480106	Optional head for 4 x 15 mL tubes, held horizontally	1
480107	Optional head for 2 x 50 mL tubes, held horizontally	1



Corning LSE Low Speed Orbital Shaker

Cat. No.	Description	Voltage	Plug Type	Speed (rpm)	Weight	Dimensions (L x W x D)	Qty/Cs
6780-FP	LSE low speed orbital shaker	120V, 50/60Hz	US	3 - 60	11 lbs. (5 kg)	10 x 12.6 x 6.3 in. (25.5 x 32 x 16 cm)	1



Corning LSE Platform Rockers

Cat. No.	Description	Platform	Voltage	Speed (Tilts/min.)	Weight	Dimensions (L x W x H)	Qty/Cs
6703	LSE platform rocker	Single	120V, 50/60Hz	5 - 120	11.7 lbs. (5.3 kg)	12.8 x 14.2 x 5.7 in. (32.5 x 36 x 14.5 cm)	1
6705	LSE platform rocker	Double	120V, 50/60Hz	5 - 120	12.7 lbs. (5.8 kg)	12.8 x 14.2 x 5.7 in. (32.5 x 36 x 14.5 cm)	1



Corning® LSE™ Digital Vortexer



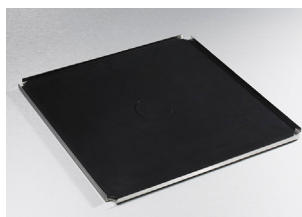
Cat. No.	Description	Voltage	Speed (rpm)	Weight	Dimensions (L x W x H)	Qty/Cs
6709	LSE digital vortexer	120V/60Hz	100 - 1,200	4.4 lbs. (2 kg)	10.3 x 13.3 x 5.1 in. (26.2 x 33.7 x 13 cm)	1

Accessories (sold separately)

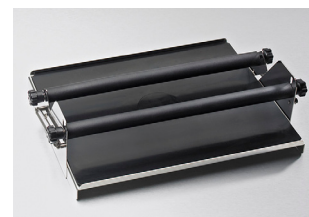
Cat. No.	Description	Qty/Cs
48010	Platform for four microplates	1
48011	Platform with non-slip rubber mat	1
48012	Spring-loaded platform for flasks, bottles, or tube racks	1



Platform for four microplates



Platform with non-slip rubber mat



Spring loaded platform for flasks, bottles, or tube racks

Liquid Handling



Corning® Stripettor® Ultra Pipet Controller

Cat. No.	Description	Qty/Cs
4099	Corning Stripettor Ultra pipet controller, with universal power supply, three 0.2 µm filters, 3 colored nose pieces, wall hanger, and 3-position charging stand	1

Accessories

Cat. No.	Description	Qty/Cs
48010	Hydrophobic PTFE filter 0.2 µm	5
48011	Hydrophobic PTFE filter 0.45 µm	5



Stripette® Serological Pipets

Individually Wrapped, Paper/Plastic Wrap

Cat. No.	Capacity (mL)	Graduations (mL)	Negative Grads. (mL)	Color-coded Stripe	Qty/Pk	Qty/Cs
4485	1	1/100	0.2	Yellow	50	1,000
4486	2	1/100	0.2	Green	50	1,000
4487	5	1/10	2.5	Blue	50	200
4488	10	1/10	3.0	Orange	50	200
4489	25	2/10	10.0	Red	25	200
4490	50	1/2	10.0	Purple	25	100
4491	100	1	N/A	Aqua	10	100



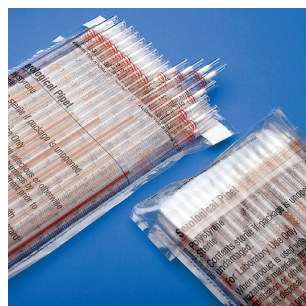
Individually Wrapped, Clear Plastic Wrap

Cat. No.	Capacity (mL)	Graduations (mL)	Negative Grads. (mL)	Color-coded Stripe	Qty/Pk	Qty/Cs
4011	1	1/100	0.2	Yellow	50	1,000
4012	1	1/100	0.2	Yellow	50	200
4021	2	1/100	0.2	Green	50	1,000
4051	5	1/10	2.5	Blue	50	200
4101	10	1/10	3.0	Orange	50	200
4492*	10	1/10	3.0	Orange	50	200
4251	25	2/10	10.0	Red	50	200
4501	50	1/2	10.0	Purple	25	100
4484	100	1	N/A	Aqua	10	100



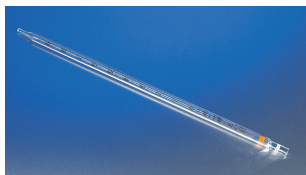
Bulk Packed in Bags

Cat. No.	Capacity (mL)	Graduations (mL)	Negative Grads. (mL)	Color-coded Stripe	Qty/Pk	Qty/Cs
4010	1	1/100	0.2	Yellow	50	1,000
4020	2	1/100	0.2	Green	50	1,000
4050	5	1/10	2.5	Blue	50	500
4100	10	1/10	3.0	Orange	50	500
4250	25	2/10	10.0	Red	25	200
4500	50	1/2	10.0	Purple	25	100



*Cat. No. 4492 features a wide tip for handling viscous fluids.

For Falcon® serological pipets, visit www.corning.com/lifesciences.



PYREX® Pipet, Reusable Glass Serological, Color-coded, Colored Markings, To Deliver

Cat. No.	Approx. Capacity (mL)	Tolerance (\pm mL)	Grad. Increment (mL)	Approx. O.D. x Length (mm)	Qty/Pk	Qty/Cs
7085-2	2.0	0.02	0.1	7 x 350	6	12
7085-5	5.0	0.04	0.1	8 x 350	6	12
7085-10	10.0	0.06	0.1	10 x 350	6	12

Do not pipet by mouth. We suggest using a mechanical pipetting device.
Reference: ASTM E-1044.

Corning® Step-R™ Starter Pack



Cat. No.	Description	Qty/Cs
6636	Corning Step-R starter pack Includes: Corning Step-R Repeating Pipettor (Cat. No. 4217); Adapter for 25 mL syringe tips (Cat. No. 4218) and 50 mL syringe tips (Cat. No. 4219); Syringe tips (5/pk) of 0.05 mL (Cat. No. 6620); 2.5 mL (Cat. No. 6623), 5 mL (Cat. No. 6624), 12.5 mL (Cat. No. 6625); Syringe tips (2/pk) of 25 mL (Cat. No. 6626), and 50 mL (Cat. No. 6627)	1 kit

Corning Step-R Syringe Tips



Syringe Tip	Cat. No. Non-sterile	Cat. No. Sterile	Qty/Cs
0.05 mL	6620	6628	100
0.5 mL	6621	6629	100
1.25 mL	6622	6630	100
2.5 mL	6623	6631	100
5 mL	6624	6632	100
12.5 mL	6625	6633	100
55 mL	6626	6634	25
50 mL	6627	6635	25

Corning Lambda™ Plus Pipettors



Corning Lambda Plus Single-, 8-, and 12-channel Pipettors

Cat. No.	Volume Range (μ L)	Channels	Accuracy (%)	Precision (%)	Non-filtered Tips (μ L)	Qty/Cs
4070	0.1 - 2.0	1	\pm 40.0 to \pm 1.5	\leq 12.0 to \leq 0.7	10	1
4071	0.5 - 10	1	\pm 4.0 to \pm 0.5	\leq 2.8 to \leq 0.4	10	1
4072	2 - 20	1	\pm 3.0 to \pm 0.8	\leq 1.5 to \leq 0.3	200	1
4073	10 - 100	1	\pm 1.6 to \pm 0.8	\leq 0.8 to \leq 0.2	200	1
4074	20 - 200	1	\pm 1.2 to \pm 0.6	\leq 0.6 to \leq 0.2	200	1
4075	100 - 1000	1	\pm 1.6 to \pm 0.6	\leq 0.40 to \leq 0.15	1000	1
4080	0.5 - 10	8	\pm 10.0 to \pm 2.0	\leq 8.0 to \leq 1.2	10	1
4081	5 - 50	8	\pm 4.0 to \pm 1.6	\leq 2.5 to \leq 0.6	200	1
4082	20 - 200	8	\pm 3.0 to \pm 1.0	\leq 1.5 to \leq 0.6	200/300	1
4083	50 - 300	8	\pm 1.6 to \pm 1.0	\leq 1.5 to \leq 0.6	300	1
4084	0.5 - 10	12	\pm 10.0 to \pm 2.0	\leq 8.0 to \leq 1.2	10	1
4085	5 - 50	12	\pm 4.0 to \pm 1.6	\leq 2.5 to \leq 0.6	200	1
4086	20 - 200	12	\pm 3.0 to \pm 1.0	\leq 1.5 to \leq 0.6	200/300	1
4087	50 - 300	12	\pm 1.6 to \pm 1.0	\leq 1.5 to \leq 0.6	300	1



Corning® Lambda™ Plus Starter Kit

Cat. No.	Description	Qty/Cs
4069	Lambda Plus starter kit Includes: Lambda Plus single-channel pipettor, 0.5 to 10 µL (Cat. No. 4071); Lambda Plus single-channel pipettor, 2 to 20 µL (Cat. No. 4072); Lambda Plus single-channel pipettor, 20 to 200 µL Cat. No. 4074); Lambda Plus single-channel pipettor, 100 to 1000 µL (Cat. No. 4075); Universal carousel rack for six single-channel pipettors (Cat. No. 4078); Corning DeckWorks Pipet Tips: 10 µL (Cat. No. 4135, 200 µL (Cat. No. 4138), and 1000 µL (Cat. No. 4140)	1 kit



Corning Lambda EliteTouch™ Pipettors

Corning Lambda EliteTouch Single-, 8-, and 12-channel Pipettors

Cat. No.	Volume Range (µL)	Channels	Accuracy (%)	Precision (%)	Non-filtered Tips (µL)	Qty/Cs
6050	0.1 - 2	1	±40.0 to ±1.5	≤12.0 to ≤0.7	10	1
6051	0.5 - 10	1	±4.0 to ±1.0	≤2.8 to ≤0.4	10	1
6052	2 - 20	1	±3.5 to ±0.8	≤1.5 to ≤0.3	200	1
6053	5 - 50	1	±3.5 to ±0.8	≤1.3 to ≤0.3	200	1
6054	10 - 100	1	±3.0 to ±0.8	≤1.0 to ≤0.2	200	1
6055	20 - 200	1	±2.0 to ±0.6	≤0.7 to ≤0.2	200	1
6056	100 - 1000	1	±2.5 to ±0.6	≤0.6 to ≤0.2	1000	1
6057	0.5 - 10	8	±10.0 to ±2.0	≤8.0 to ≤1.2	10	1
6058	5 - 50	8	±4.0 to ±1.6	≤2.5 to ≤0.6	200	1
6059	10 - 200	8	±5.0 to ±1.0	≤3.0 to ≤0.6	200/300	1
6060	30 - 300	8	±3.0 to ±1.0	≤1.5 to ≤0.6	300	1
6061	0.5 - 10	12	±10.0 to ±2.0	≤8.0 to ≤1.2	10	1
6062	5 - 50	12	±4.0 to ±1.6	≤2.5 to ≤0.6	200	1
6063	10 - 200	12	±5.0 to ±1.0	≤3.0 to ≤0.6	200/300	1
6064	30 - 300	12	±3.0 to ±1.0	≤1.5 to ≤0.6	300	1



Corning Lambda EliteTouch Starter Kit

Cat. No.	Description	Qty/Cs
6065	Corning Lambda EliteTouch Starter Kit Includes: 4 single-channel pipettors: 0.5 to 10 µL (Cat. No. 6051), 2 to 20 µL (Cat. No. 6052), 20 to 200 µL (Cat. No. 6055), 100 to 1000 µL (Cat. No. 6056); universal linear stand for four single-channel pipettors (Cat. No. 6066); Corning DeckWorks pipet tips: 10 µL (Cat. No. 4115), 200 µL (Cat. No. 4116), 1000 µL (Cat. No. 4119); 3 colored pushbuttons (4 sets)	1 kit



Corning DeckWorks Reload Systems

Standard Tips

Cat. No.	Volume Range (µL)	Color	Sterile	Decks/Pk	Tips/Pk	Pk/Cs
4125	0.1 - 10	Natural	No	10	960	4
4126	1 - 200	Natural	No	10	960	4
4128	1 - 300	Natural	No	10	960	4
4129	100 - 1,000	Natural	No	8	768	4

Low Binding Tips

4153	0.1 - 10	Natural	No	10	960	4
4154	1 - 200	Natural	No	10	960	4
4155	1 - 300	Natural	No	10	960	4



Corning DeckWorks Hinged Rack Pipet Tips

Standard Tips

Cat. No.	Volume Range (µL)	Color	Sterile	Decks/Pk	Tips/Pk	Pk/Cs
4120	0.1 - 10	Natural	Yes	10	960	4
4115	0.1 - 10	Natural	No	10	960	4
4121	1 - 200	Natural	Yes	10	960	4
4116	1 - 200	Natural	No	10	960	4
4122	1 - 200	Yellow	Yes	10	960	4
4117	1 - 200	Yellow	No	10	960	4
4123	1 - 300	Natural	Yes	10	960	4
4118	1 - 300	Natural	No	10	960	4
4124	100 - 1000	Natural	Yes	8	768	4
4119	100 - 1000	Natural	No	8	768	4

Low Binding Tips

Cat. No.	Volume Range (µL)	Color	Sterile	Decks/Pk	Tips/Pk	Pk/Cs
4150	0.1 - 10	Natural	Yes	10	960	4
4147	0.1 - 10	Natural	No	10	960	4
4151	1 - 200	Natural	Yes	10	960	4
4148	1 - 200	Natural	No	10	960	4
4152	1 - 300	Natural	Yes	10	960	4
4149	1 - 300	Natural	No	10	960	4

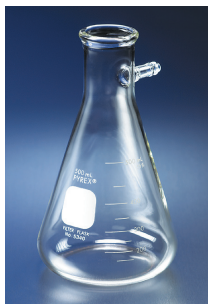
Low Binding Barrier Tips

4135	0.1 - 10	Natural	Yes	10	960	4
4136	1 - 20	Natural	Yes	10	960	4
4137	1 - 100	Natural	Yes	10	960	4
4138	1 - 200	Natural	Yes	10	960	4
4139	1 - 200	Natural	Yes	8	768	4
4140	100 - 1000	Natural	Yes	8	768	4

Corning DeckWorks Tip Station



Cat. No.	Volume Range (µL)	Color	Sterile	Decks/Pk	Tips/Pk	Pk/Cs
4141	0.1 - 10	Natural	No	N/A	960	5
4143	0.1 - 10	Natural	Yes	N/A	960	5
4142	1 - 200	Natural	No	N/A	960	5
4144	1 - 200	Natural	Yes	N/A	960	5



PYREX® Flask, Filtering, Heavy Wall, Tubulation, Graduated

Cat. No.	Approx. Capacity (mL)	Grad. Range (mL)	Grad. Increment (mL)	Rubber Stopper No.	Approx. O.D. x Height (mm)	Qty/Pk	Qty/Cs
5340-500	500	150 - 500	50	7	106 x 184	6	18



PYREX Flask, Volumetric, Class A, PYREX § Stopper

Cat. No.	Description	Capacity (mL)	Tol. (± mL)	Approx. O.D. x Height (mm)	§ Stopper No.	Qty/Pk	Qty/Cs
5640-100	Complete	100	0.08	60 x 181	13	6	12
5640-500	Complete	500	0.20	99 x 287	19	6	12
5640-1L	Complete	1,000	0.30	127 x 346	22	1	6



PYREX Flask, Erlenmeyer, Narrow Mouth, Heavy Duty Rim, Graduated

Cat. No.	Approx. Capacity (mL)	Rubber Stopper No.	Grad. Range (mL)	Grad. Increment (mL)	Approx. O.D. x Height (mm)	Qty/Pk	Qty/Cs
4980-125	125	5	50 - 125	25	67 x 114	12	48
4980-500	500	7	100 - 500	50	101 x 176	6	3

PYREX Flask, Kjeldahl, Round Bottom, Long Neck

Cat. No.	Approx. Capacity (mL)	Rubber Stopper No.	Approx. O.D. x Height (mm)	Qty/Pk	Qty/Cs
5420-500	500	6	101 x 324	6	24



Graduated Cylinder



PYREX® Cylinder, Single Metric Scale, Graduated, To Contain

Cat. No.	Capacity (mL)	Grad. Increment (mL)	ASTM Tol. (± mL)	Approx. O.D. x Height (mm)	Qty/Pk	Qty/Cs
3022-100	100	1.0	1.0	29 x 254	1	12
3022-250	250	2.0	2.0	39 x 340	1	12

Biochemical Oxygen Demand Bottle



Corning® Biochemical Oxygen Demand (BOD) Testing Bottle and Stopper

BOD bottles are suitable for incubating diluted samples of sewage, sewage effluents, polluted waters, and industrial wastes to determine the amount of oxygen required during the stabilization of the decomposable organic matter by aerobic biochemical action.

Cat. No.	Approx. Capacity (mL)	Stopper No.	Approx. O.D. x Height (mm)	Qty/Pk	Qty/Cs
1510-300	300	19 DBO	69 x 143	6	24

Beaker



PYREX Beaker, Low Form, Double Scale, Graduated

Cat. No.	Approx. Capacity (mL)	Graduation Range (mL)	Approx. O.D. x Height (mm)	Graduation Increment (mL)	Qty/Pk	Qty/Cs
1000-250	250	25-200	68 x 90	25	12	48

Centrifugation and Storage



Corning Centrifuge Tubes

Cat. No.	Description	Material	Cap Style	Max. RCF	Qty/Pk	Qty/Cs
430052	15 mL conical bottom tube	PP	Plug seal	12,000	50/rack	500
430766	15 mL conical bottom tube	PP	Plug seal	12,000	50/sleeve	500
430790	15 mL conical bottom tube	PP	CentriStar™	12,500	50/rack	500
430791	15 mL conical bottom tube	PP	CentriStar	12,500	50/sleeve	500
430897	50 mL self-standing bottom tube	PP	Plug seal	3,000	25/sleeve	500
430921	50 mL self-standing bottom tube	PP	CentriStar	3,000	25/sleeve	500
430290	50 mL conical bottom tube	PP	Plug seal	15,500	25/rack	500
430291	50 mL conical bottom tube	PP	Plug seal	15,500	25/sleeve	500
430828	50 mL conical bottom tube	PP	CentriStar	17,000	25/rack	500
430829	50 mL conical bottom tube	PP	CentriStar	17,000	25/sleeve	500

Corning Centrifuge Tubes and Support Cushions

Cat. No.	Description	Material	Cap Style	Max. RCF	Qty/Pk	Qty/Cs
430776	250 mL tube	PP	Plug seal	6,000	6	102
430236	250 mL support cushion*	PEI	N/A	N/A	N/A	6
431123	500 mL tube	PP	Plug seal	6,000	6	36
431124	500 mL support cushion*	PEI	N/A	N/A	N/A	6

*Support cushions must be used with the 250 mL and 500 mL centrifuge tubes unless the rotor has appropriately shaped V-bottom holders. PP = Polypropylene, RCF = Relative Centrifugal Force (x g), PEI = Polyetherimide

Axygen® SnapLock Microcentrifuge Tubes

0.6 mL, Homopolymer

Cat. No.	Surface	Color	Packaging	Qty/Pk	Qty/Cs
MCT-060-C	Standard	MaxyClear	Bulk	1,000	10
MCT-060-B	Standard	Blue	Bulk	1,000	10
MCT-060-G	Standard	Green	Bulk	1,000	10
MCT-060-O	Standard	Orange	Bulk	1,000	10
MCT-060-R	Standard	Red	Bulk	1,000	10
MCT-060-V	Standard	Violet	Bulk	1,000	10
MCT-060-X	Standard	Amber	Bulk	1,000	10



Axygen® SnapLock Microcentrifuge Tubes (continued)



1.5 mL, Homopolymer

Cat. No.	Surface	Color	Packaging	Qty/Pk	Qty/Cs
MCT-150-C	Standard	MaxyClear	Bulk	500	10
MCT-150-B	Standard	Blue	Bulk	500	10
MCT-150-G	Standard	Green	Bulk	500	10
MCT-150-O	Standard	Orange	Bulk	500	10
MCT-150-R	Standard	Red	Bulk	500	10
MCT-150-V	Standard	Violet	Bulk	500	10
MCT-150-X	Standard	Amber	Bulk	500	10



2.0 mL, Homopolymer

MCT-200-C	Standard	MaxyClear	Bulk	500	10
MCT-200-B	Standard	Blue	Bulk	500	10
MCT-200-G	Standard	Green	Bulk	500	10
MCT-200-O	Standard	Orange	Bulk	500	10
MCT-200-V	Standard	Violet	Bulk	500	10
MCT-200-X	Standard	Amber	Bulk	500	10



5.0 mL, Homopolymer

MCT-500-C	Standard	Clear	Bulk	250	5
MCT-500-X	Standard	Amber	Bulk	250	5

Axygen Microcentrifuge Tubes with Screw Cap



Cat. No.	Volume (mL)	Style	Color	Packaging
SCT-050-SS-C-S	0.5	Self-standing, sterile	Clear	100/bag, 5 bags/pk, 8 pk/cs
SCT-150-SS-C-S	1.5	Self-standing, sterile	Clear	100/bag, 5 bags/pk, 8 pk/cs
SCT-200-SS-C-S	2.0	Self-standing, sterile	Clear	100/bag, 5 bags/pk, 8 pk/cs

Colored-cap versions are also available in sterile format.

Additional Glassware



PYREX® 2.4L Desiccator, Small Knob Top

Cat. No.	Description	Approx. I.D. of Ground Flange (mm)	Approx. Chamber Depth (mm)	Approx. Height (mm)	Plate Diameter (mm)	Qty/Cs
3081-150	Complete	172	81	252	140	1



PYREX Fritted Disc, Gooch Type, High Form

Cat. No.	Approx. Capacity (mL) and Porosity	Approx. Disc O.D. (mm)	Approx. O.D. x Height (mm)	Qty/Cs
32940-50M	50	40	45 x 60	9



PYREX Apparatus, Distilling, Kjeldahl, Nitrogen, § Joints

Cat. No.	Approx. Capacity (mL) and Porosity	Approx. O.D. x Height (mm)	Qty/Cs
3340-500	Complete	500	1



PYREX Funnel, Fluted, 60° Angle, Short Stem

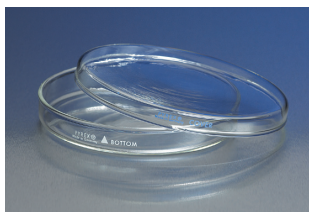
Cat. No.	Approx. Top I.D. (mm)	Approx. Stem Length x O.D. (mm)	Approx. Overall Length (mm)	Qty/Pk	Qty/Cs
6180-65	65	65 x 8	121	12	48



PYREX Buret, Colored Scale, Class A, § PTFE Stopcock Plug

Cat. No.	Approx. Capacity (mm)	Grad. Increment (mL)	Tol. (± mL)	Approx. O.D. x Height (mm)	Qty/Cs
2103-50	50	0.10	0.05	14 x 750	1

Petri Dishes



PYREX® Petri Dish, with Cover

Cat. No.	Description	Size (mm)	Approx. O.D. x Height (mm)	Qty/Pk	Qty/Cs
3160-100	Complete	100 x 10	100 x 14	12	72



Corning® Gosselin™ Petri Dishes

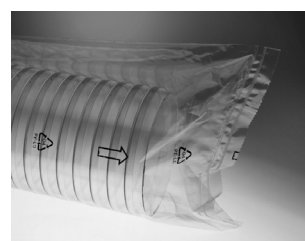
Petri Dish, 60 x 15 mm (D x H)

Cat. No.	Vents	Sterile	Units/Sleeve	Sleeves	Outer Bag	Qty/Cs
BP53-03	6	Yes	15	108	2	1,620



Petri Dish, 150 x 15 mm (D x H)

Cat. No.	Vents	Sterile	Units/Sleeve	Sleeves	Outer Bag	Qty/Cs
BP143-06	3	Yes	11	16	2	176



Inoculating Loops

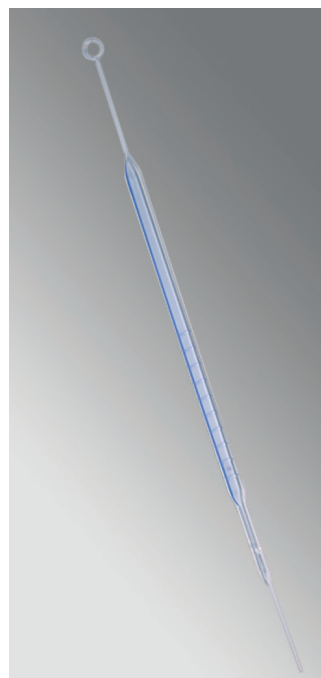
Corning® Gosselin™ Inoculating Loops

PS Inoculating Loops – Needle Extremity

Cat. No.	Volume (µL)	Length (mm)	Color	Sterile	Qty/Bag	Qty/Box	Qty/Cs
OS1-01	1	192	Crystal green	Yes	20	150 x 3	9,000
OS10-02	10	194	Crystal blue	Yes	20	150 x 3	9,000



Needle Extremity – 1 µL



Needle Extremity – 10 µL

Autoclave Bags



Corning® Gosselin™ Autoclave Bags

Transparent

Cat. No.	Volume (L)	Height (mm)	Length (mm)	Thermal Resistance	Qty/Cs
SA03-01	3	400	255	134°C	500
SA09-01	9	500	300	134°C	500
SA14-01	14	600	400	134°C	500
SA21-01	21	780	400	134°C	500
SA33-01	33	780	600	134°C	500



Biohazard Logo Printed

Cat. No.	Volume (L)	Height (mm)	Length (mm)	Thermal Resistance	Qty/Cs
SA03-10	3	400	255	134°C	500
SA09-10	9	500	300	134°C	500
SA14-10	14	600	400	134°C	500
SA21-10	21	780	400	134°C	500
SA33-10	33	780	600	134°C	500

Warranty/Disclaimer: Unless otherwise specified, all products are for research use or general laboratory use only.* Not intended for use in diagnostic or therapeutic procedures. Not for use in humans. These products are not intended to mitigate the presence of microorganisms on surfaces or in the environment, where such organisms can be deleterious to humans or the environment. Corning Life Sciences makes no claims regarding the performance of these products for clinical or diagnostic applications. *For a listing of US medical devices, regulatory classifications or specific information on claims, visit www.corning.com/resources.

Corning's products are not specifically designed and tested for diagnostic testing. Many Corning products, though not specific for diagnostic testing, can be used in the workflow and preparation of the test at the customers discretion. Customers may use these products to support their claims. We cannot make any claims or statements that our products are approved for diagnostic testing either directly or indirectly. The customer is responsible for any testing, validation, and/or regulatory submissions that may be required to support the safety and efficacy of their intended application.

CORNING

Corning Incorporated
Life Sciences

www.corning.com/lifesciences

NORTH AMERICA

t 800.492.1110
t 978.442.2200

ASIA/PACIFIC

Australia/New Zealand
t 61 427286832

Chinese Mainland
t 86 21 3338 4338

India

t 91 124 4604000

Japan

t 81 3-3586 1996

Korea

t 82 2-796-9500

Singapore

t 65 6572-9740

Taiwan

t 886 2-2716-0338

EUROPE

CSEurope@corning.com

France

t 0800 916 882

Germany

t 0800 101 1153

The Netherlands

t 020 655 79 28

United Kingdom

t 0800 376 8660

All Other European Countries

t +31 (0) 206 59 60 51

LATIN AMERICA

grupoLA@corning.com

Brazil

t 55 (11) 3089-7400

Mexico

t (52-81) 8158-8400